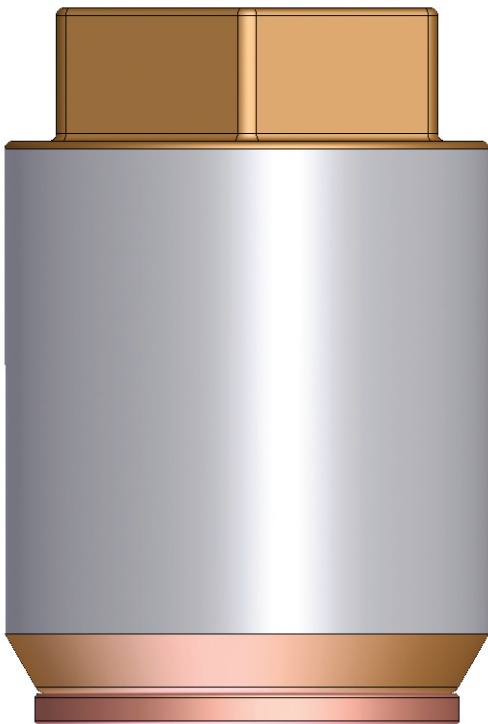
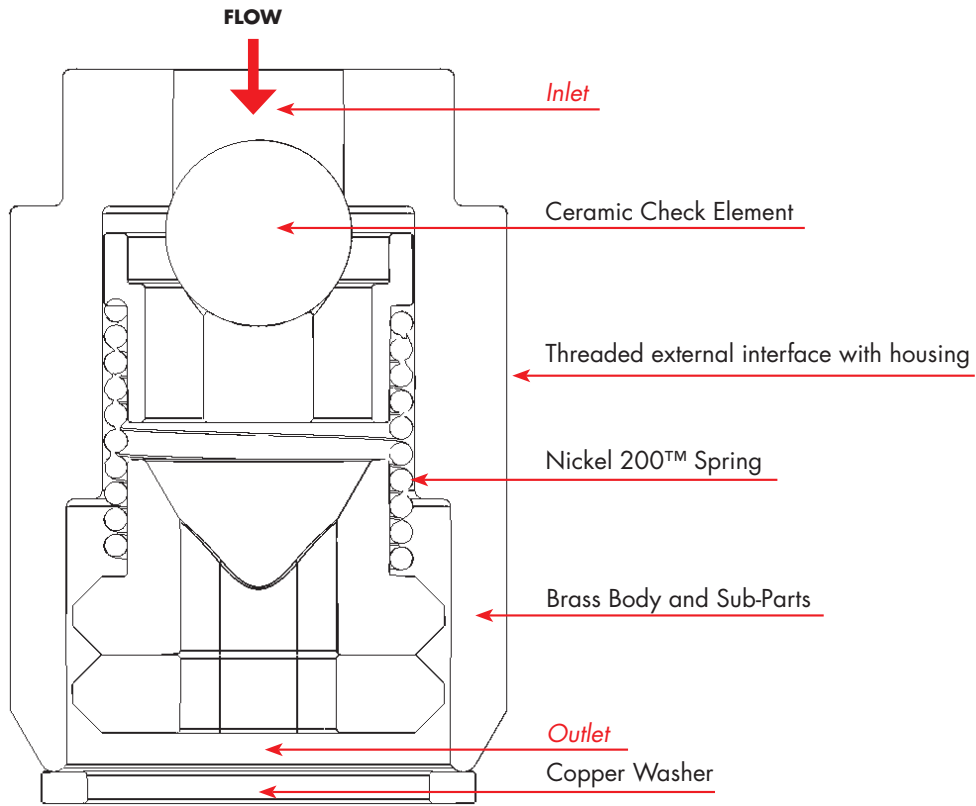


● Oxygen Check Element Insert

For manifold applications in inlet and/or outlet configurations



Feature	Option	Description
Inlet Fitting	1	10 mm (0.4") AF hex flats
	C	Custom – Please specify
Manifold Interface	1	1/2" X 24 UNF thread with copper washer for interface seal
	C	Custom – Please specify
Overall Length	...	18 mm (0.7")
Overall Diameter	...	13 mm (0.5")
Mass	...	15 g (0.03 lb)

- Custom outer geometry and manifold interface also available
- Manifold cleaning and assembly also available

● Ordering Code

Include Option(s) from table above:

OC-002-
Inlet Fitting _____
Manifold Interface _____

Please specify details for any custom requirements.